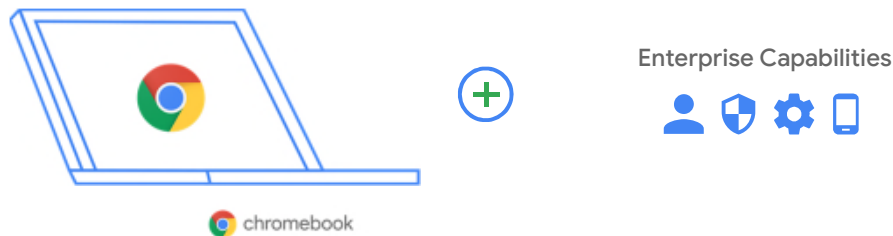


# IT set free with Chrome Enterprise

## What is Chrome Enterprise?

Chrome Enterprise combines the end user benefits of Chromebooks with the business capabilities of Chrome OS for IT to power the cloud workforce to work securely and effectively from anywhere.



### For your **cloud workforce**



#### Easy access to apps

Easy access for users to enterprise applications via Chrome Browser<sup>1</sup>, managed Google Play storefront, or legacy applications with third party VDI solutions.

#### A smart way to work

Reduce downtime with automatic updates, fast boot times, and a seamless experience across devices - enabling a smart way to work for your cloud workers.

#### Versatile devices

Multiple form factors including premium and 2-in-1 devices, to give employees the hardware they want, regardless of the use case.

### For your **business**



#### Secure by design

Chrome Enterprise is secure by design, enabling IT to provide trusted applications to their users and to protect against current threats.

#### Enterprise capabilities

Chrome Enterprise brings enterprise capabilities to your Chromebook fleet - advancing security, ensuring flexible access, and simplifying orchestration.

#### Smart investment

According to ESG<sup>3</sup>, Deploying Chromebooks in the workplace can provide total annual savings for economic benefit year on year.



Chrome Enterprise provides the rugged hardware and reliable OS needed in high-pressure emergency situations, along with easy management tools."

**Michael Romatzick,**  
*Desktop Architect,*  
Middlesex Health

1. Use of Chrome Browser is subject to the Chrome Browser Terms of Service ([https://www.google.com/chrome/privacy/eula\\_text.html](https://www.google.com/chrome/privacy/eula_text.html))  
2. Use of managed Google Play is subject to the managed Google Play Terms of Service (<https://www.android.com/enterprise/terms/>).  
3. "Quantifying the Value of Google Chromebooks with Chrome Enterprise", ESG ([https://cloud.google.com/files/chrome-enterprise/Esg\\_Economic\\_Value\\_Validation\\_White\\_Paper.pdf](https://cloud.google.com/files/chrome-enterprise/Esg_Economic_Value_Validation_White_Paper.pdf))

# Enterprise capabilities of Chrome Enterprise



## Advanced security

- ✓ Lost and stolen protections
- ✓ Persistent enrollment
- ✓ Application verified access
- ✓ Ephemeral mode



## Flexible access

- ✓ Local AD integration<sup>1</sup>
- ✓ Advanced SAML SSO
- ✓ Sign in controls & auditing
- ✓ Managed guest sessions
- ✓ Kiosk mode



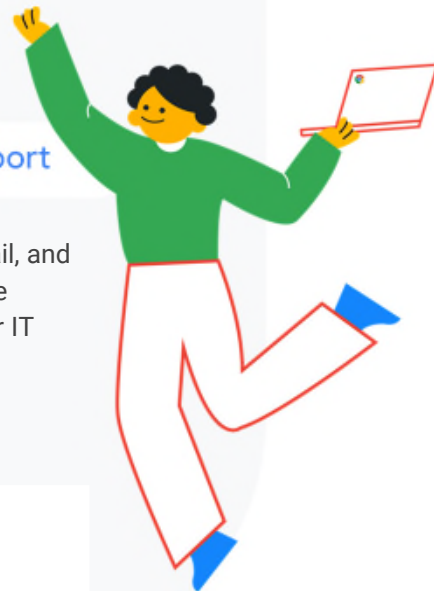
## Simplified orchestration

- ✓ Google or 3rd party UEM
- ✓ Device policies
- ✓ Client certificates
- ✓ Printers
- ✓ Networks and proxies
- ✓ Device reporting
- ✓ OS versions



## 24x7 IT Admin Support

- ✓ Support via phone, email, and other methods available directly from Google for IT admins



Contact our sales team to discuss your needs at <https://www.allcovered.com/it-services/business-solutions/google-chrome-enterprise/>



As well as saving us money, Chromebooks buy us time and freedom. Engineers don't need to worry about security or wait for IT to configure or lock down Chromebooks. They can just get to work."

**Jon Debonis**, *Head of Security*, Blend

1. Use of this feature requires you to have an agreement for Active Directory. For more information, see <https://support.google.com/chrome/a/answer/7497916?hl=en>.  
2. Use of this feature requires you to have an agreement with a UEM provider. For more information, see <https://support.google.com/chrome/a/answer/7532316?hl=en>.