

THE STATE OF HEALTHCARE



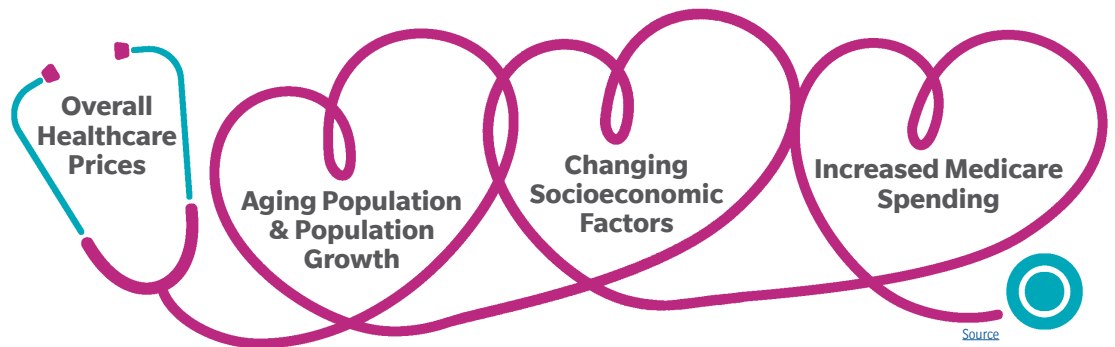
Around
450 MILLION
people currently suffer from mental disorders placing it among the leading causes of ill health and disability.
Source

2.4
DOCTORS
per 1,000 patients
Source



US healthcare spending is projected to reach
\$6.19 trillion
and account for 19.7% of GDP, up from 17.7%.

FACTORS EXPECTED TO IMPACT HIGHER HEALTH CARE SPENDING

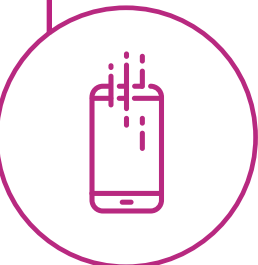


\$940

PER PERSON
is spent on administrative costs.

4X MORE
than the average of other wealthy countries and significantly more than we spend on preventive or long-term healthcare¹.

33% OF TASKS
performed by health care practitioners and technical occupations can be automated.
Source



MILLENNIALS INTERACT WITH THE HEALTHCARE SYSTEM DIFFERENTLY

Source



62%

OF MILLENNIALS

only see the doctor when sick or need urgent care

vs. 41% of baby boomers

51%

OF MILLENNIALS

are likely to use telemedicine to access healthcare

vs. 32% of baby boomers

41%

OF MILLENNIALS

are likely to use on-line counseling for mental health care

vs. 17% of baby boomers

HEALTHCARE BREACHES ARE THE COSTLIEST AT

\$7.13 MILLION

DUE TO FEDERAL AND STATE REGULATIONS, LIKE HIPAA.
Source

PAPER/FAX REMAINS A POTENTIAL CYBER-SECURITY THREAT
Source



1,500+ HEALTHCARE ORGANIZATIONS SPENT A TOTAL OF

160 MILLION

ON RANSOMWARE RECOVERY IN THE LAST FOUR YEARS.
Source

60-70% OF TIME LOOKING FOR INSIGHTS IS WASTED ON DATA INGESTION
Source



43% of health system and **63%** of health plan leaders said they plan to use the **compliance** requirements as part of their broader **interoperability** strategy

Source

41% of providers say challenges with data and **analytics** to accurately estimate costs is preventing them from succeeding in **value-based** care models

Source

40% of healthcare executives are somewhat or very likely to **acquire, partner** or **collaborate** across healthcare sectors

Source

79% of providers think that **lack of analytical tools** is a barrier to effectively segmenting their **patient population**

Source

49% of patients say **AI** can help clinicians provide **higher-quality** health care

Source

KEY DRIVERS OF INNOVATION



COVID



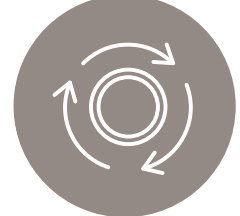
VALUE-BASED CARE



PERSONALIZED SERVICE,
CONVENIENCE/ACCESS
TRANSPARENCY DEMAND



SECURITY AND
COMPLIANCE



REVENUE CYCLE
MANAGEMENT



ALTERNATIVE
EMPLOYMENT MODELS



INNOVATIVE CARE
DELIVERY MODELS



ADVANCED DIGITAL
TECHNOLOGIES



DATA
INTEROPERABILITY

Healthcare organizations are currently experiencing significant financial pressure, while the market structure and its forces continue to create more serious challenges. Navigating a changing landscape that has new rules and more competitors only add to the burden. Gain a competitive edge with valuable insights, improved convenience, secured access, reduced costs, and proactively engaged patients for better care delivery.

Explore the possibilities at ReshapeHealthcareIT.com